

Retina
Consultants
of Texas

2022

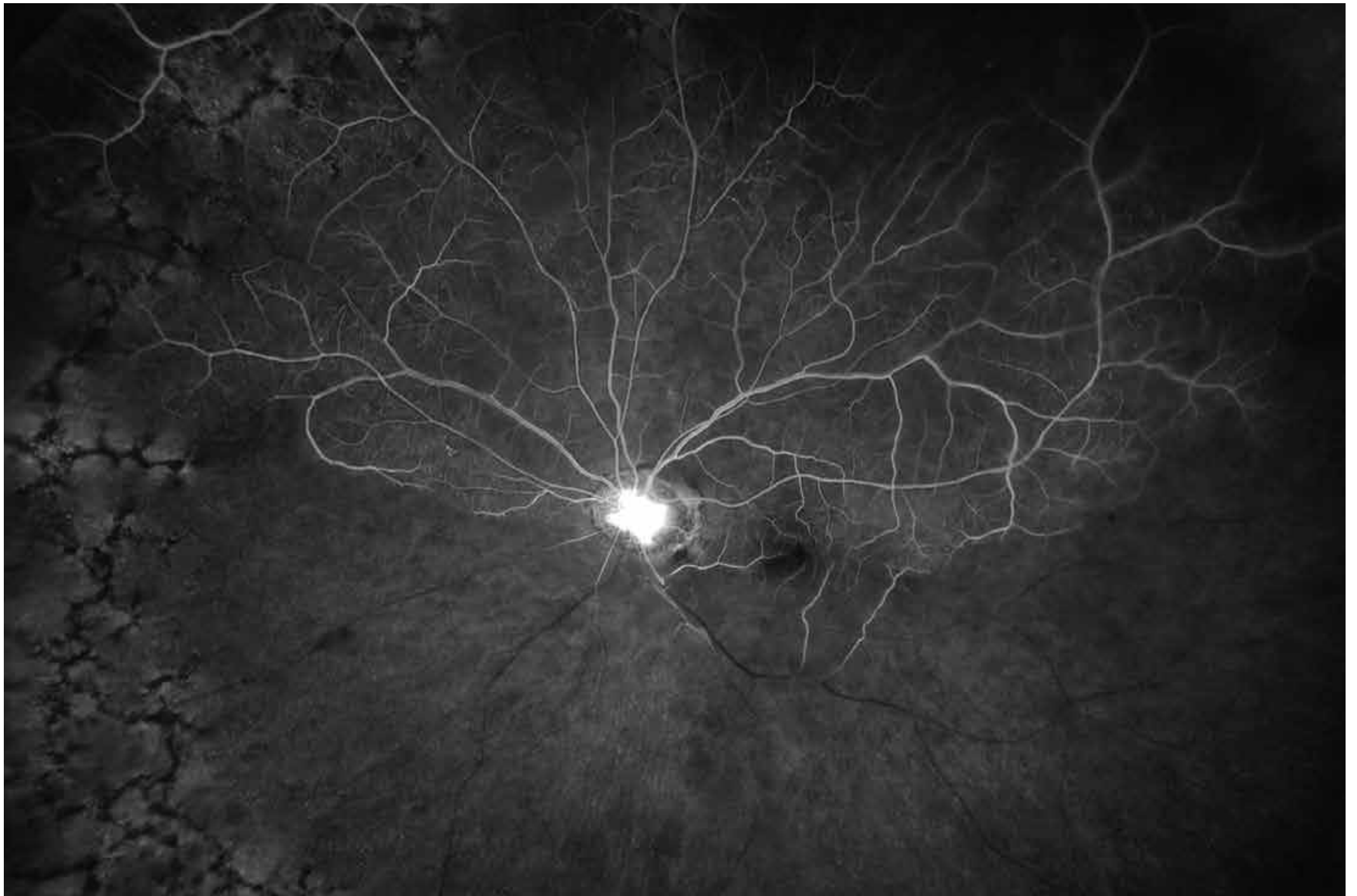


IMAGE OF THE YEAR

Every year, we see tens of thousands of patients and select the most striking image for the cover of our calendar. This year's cover photo features a Branch Retinal Artery Occlusion (BRAO) with State of Texas shape neovascularization of the disc. Photo by Angela Clemmons, Retina Consultants of Texas.

HARNESSING OUR COLLECTIVE STRENGTH TO SERVE YOU BETTER



Retina
Consultants
of Texas



Retina Group
of Florida™



VitreoRetinal Surgery, PLLC



Operating independently under the Retina Consultants of America umbrella.



RETINA
CONSULTANTS OF AMERICA



Dear Valued Partner,

Thank you for trusting Retina Consultants of Texas to care for your patients. It is our honor and privilege to collaborate with you in our fight against blindness.

This 29th edition of our annual calendar is a special collaboration between our practice and six other retina-only groups across the country that formed a partnership as Retina Consultants of America. We are proud to showcase work from our partners at Retina Group of Florida, Vitreoretinal Consultants in New York, Retina Consultants Medical Group in Northern California, California Retina Consultants, Vitreoretinal Surgery, PA in Minnesota and Palmetto Retina Center in South Carolina.

This past year we celebrated a milestone in RCTX history with the opening of our new flagship clinic and research center in Bellaire, Texas at 4460 Bissonnet, Ste. 200. This facility was in the works for many years and our team was excited to move in February 2021. We continue to have a presence in the Texas Medical Center and will be relocating into a new space in early 2022.

We also welcomed uveitis specialist, Dr. Kelly L. Larkin, to our practice. Dr. Larkin specializes in uveitis, scleritis, orbital inflammation, infectious eye diseases and ocular immunology. She is available to patients 5 days a week at our new Bellaire office.

In June, we welcomed the physicians of Retinal Consultants of San Antonio to our group. Together, we now serve patients and referring providers as the largest retina practice in Texas and the largest retina research center in the United States. Our new partnership will enhance patient care and research for those we serve in our communities. Our partners in San Antonio include Calvin E. Mein, MD, Moises A. Chica, MD, R. Gary Lane, MD, Sarah E. Holy, MD and Darrell E. Baskin, MD.

In July, we relocated our Memorial clinic into a brand-new space. The new Memorial clinic is located at 10100 Katy Freeway, Ste. 100, Houston, TX 77043, on the first floor of a new office building and offers convenient parking. We are proud to be able to offer the same level of service to your patients in a much larger space.

In the year ahead, we look forward to the opening of our new TMC and Northwest/Cypress locations as well as the addition of two new retina specialists, who will be joining us in the fall of 2022.

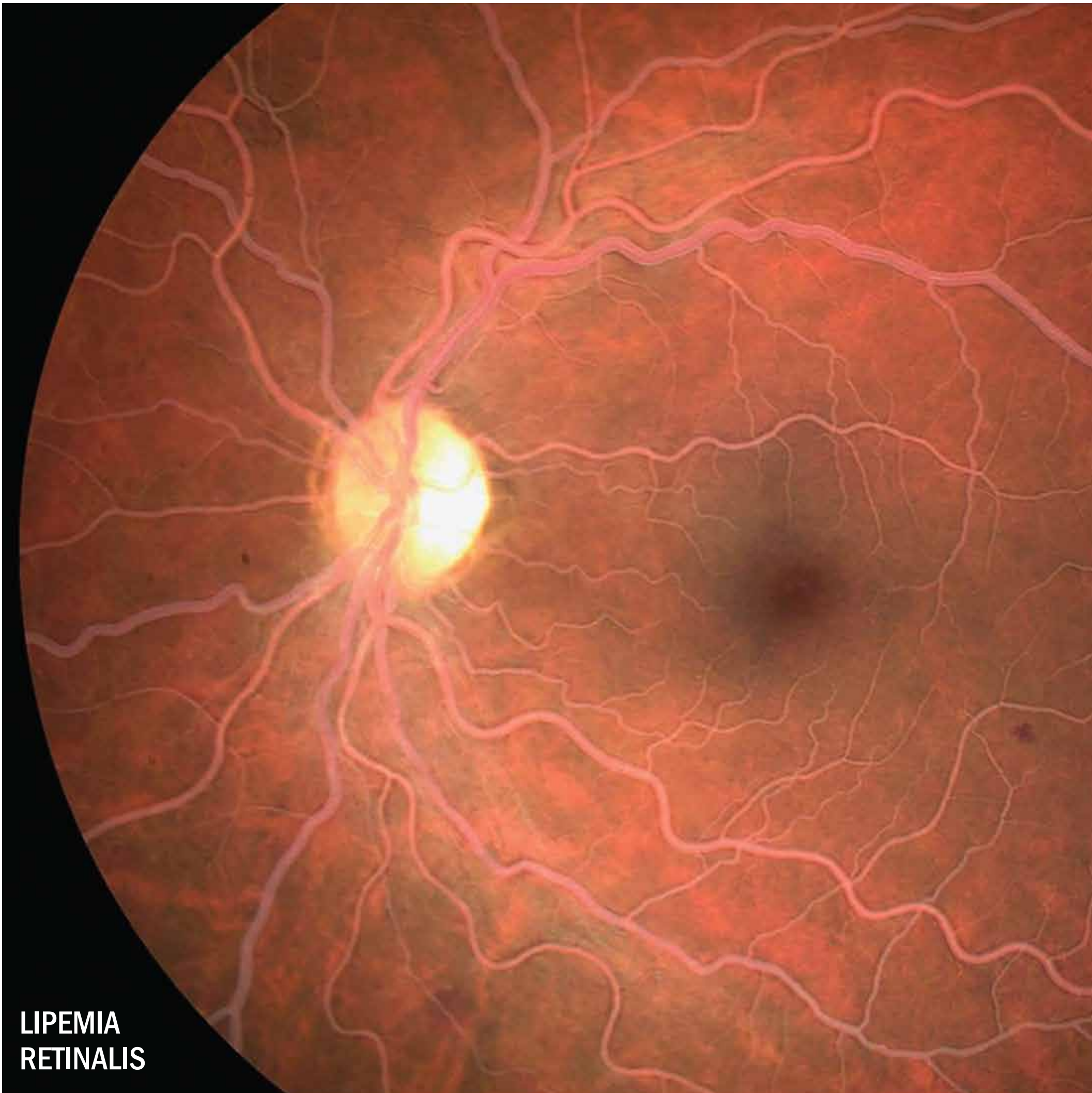
Wishing you a healthy and prosperous 2022.

Sincerely,

The Physicians at Retina Consultants of Texas

DARRELL E. BASKIN, MD • MATTHEW S. BENZ, MD • DAVID M. BROWN, MD, FACS • ERIC CHEN, MD • MOISES A. CHICA, MD • RICHARD H. FISH, MD, FACS • CHRISTOPHER R. HENRY, MD
SARAH E. HOLY, MD • ROSA Y. KIM, MD • R. GARY LANE, MD • KELLY L. LARKIN, MD • JAMES C. MAJOR, JR., MD, PHD, FACS • CALVIN E. MEIN, MD • VY T. NGUYEN, MD
SAGAR B. PATEL, MD • AMY C. SCHEFLER, MD, FACS • ANKOOR R. SHAH, MD • TIEN P. WONG, MD • CHARLES C. WYKOFF, MD, PHD, FACS

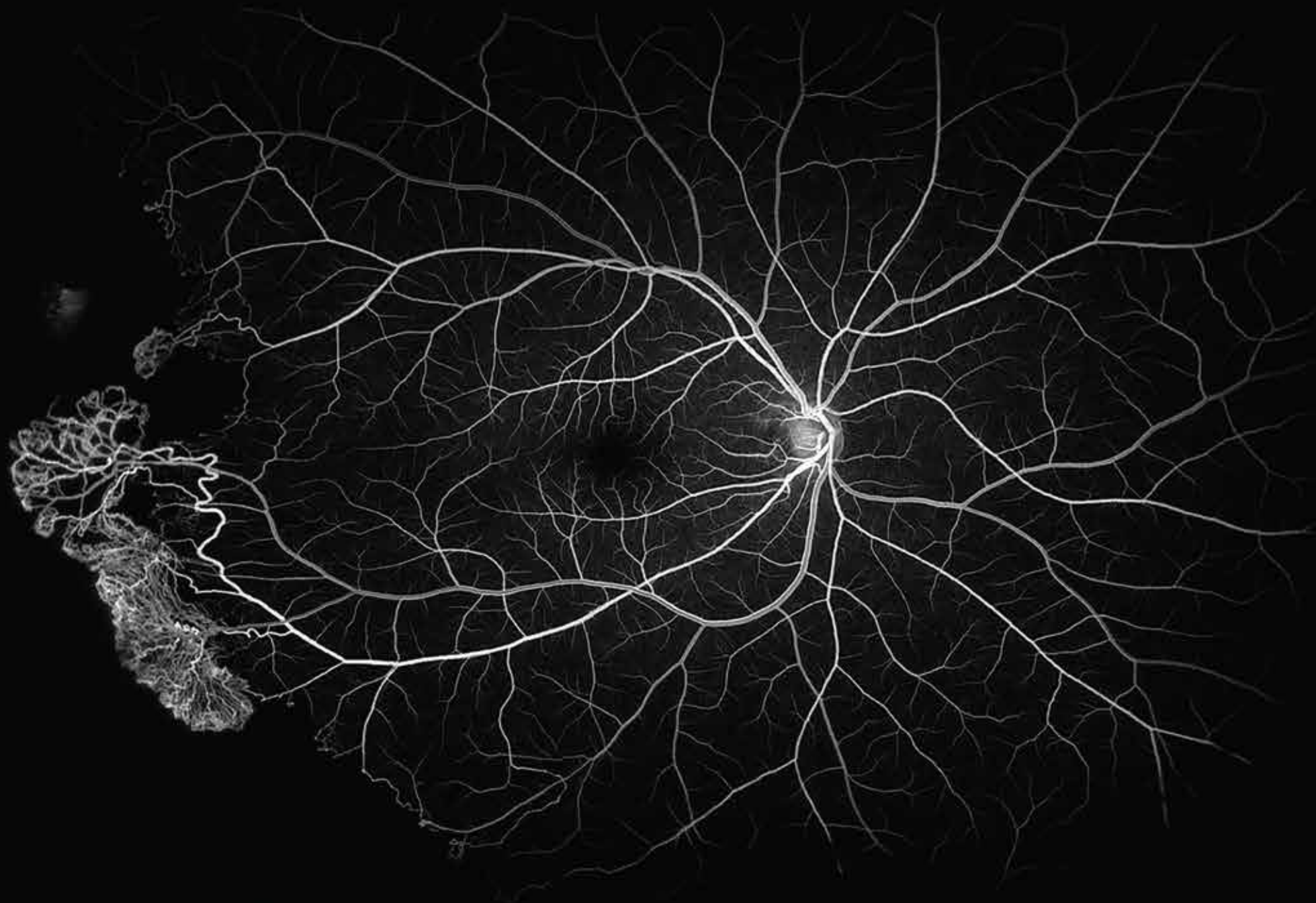
**LIPEMIA
RETINALIS**



January

DECEMBER							FEBRUARY						
S	M	T	W	T	F	S	S	M	T	W	T	F	S
			1	2	3	4			1	2	3	4	5
5	6	7	8	9	10	11	6	7	8	9	10	11	12
12	13	14	15	16	17	18	13	14	15	16	17	18	19
19	20	21	22	23	24	25	20	21	22	23	24	25	26
26	27	28	29	30	31		27	28					

SUNDAY	MONDAY	TUESDAY	WEDNESDAY	THURSDAY	FRIDAY	SATURDAY
26	27	28	29	30	31	1
2	3	4	5	6	7	8
9	10	11	12	13	14	15
16	17	18	19	20	21	22
23	24	25	26	27	28	29
30	31	1	2	3	4	5



**SEA FAN NEOVASCULARIZATION
IN SICKLE RETINOPATHY**

February

JANUARY

S	M	T	W	T	F	S
						1
2	3	4	5	6	7	8
9	10	11	12	13	14	15
16	17	18	19	20	21	22
23	24	25	26	27	28	29
30	31					

MARCH

S	M	T	W	T	F	S
		1	2	3	4	5
6	7	8	9	10	11	12
13	14	15	16	17	18	19
20	21	22	23	24	25	26
27	28	29	30	31		

SUNDAY	MONDAY	TUESDAY	WEDNESDAY	THURSDAY	FRIDAY	SATURDAY
30	31	1	2	3	4	5
6	7	8	9	10	11	12
13	14	15	16	17	18	19
20	21	22	23	24	25	26
27	presidents' day 28	1	2	3	4	5



**RETINAL CAPILLARY
HEMANGIOBLASTOMA IN
VON HIPPEL-LINDAU DISEASE**

March

FEBRUARY

S	M	T	W	T	F	S
		1	2	3	4	5
6	7	8	9	10	11	12
13	14	15	16	17	18	19
20	21	22	23	24	25	26
27	28					

APRIL

S	M	T	W	T	F	S
					1	2
3	4	5	6	7	8	9
10	11	12	13	14	15	16
17	18	19	20	21	22	23
24	25	26	27	28	29	30

SUNDAY	MONDAY	TUESDAY	WEDNESDAY	THURSDAY	FRIDAY	SATURDAY
27	28	1	2	3	4	5
6	7	8	9	10	11	12
13	14	15	16	17	18	19
20	21	22	23	24	25	26
27	28	29	30	31	1	2



**BRANCH RETINAL
ARTERY OCCLUSION**

April

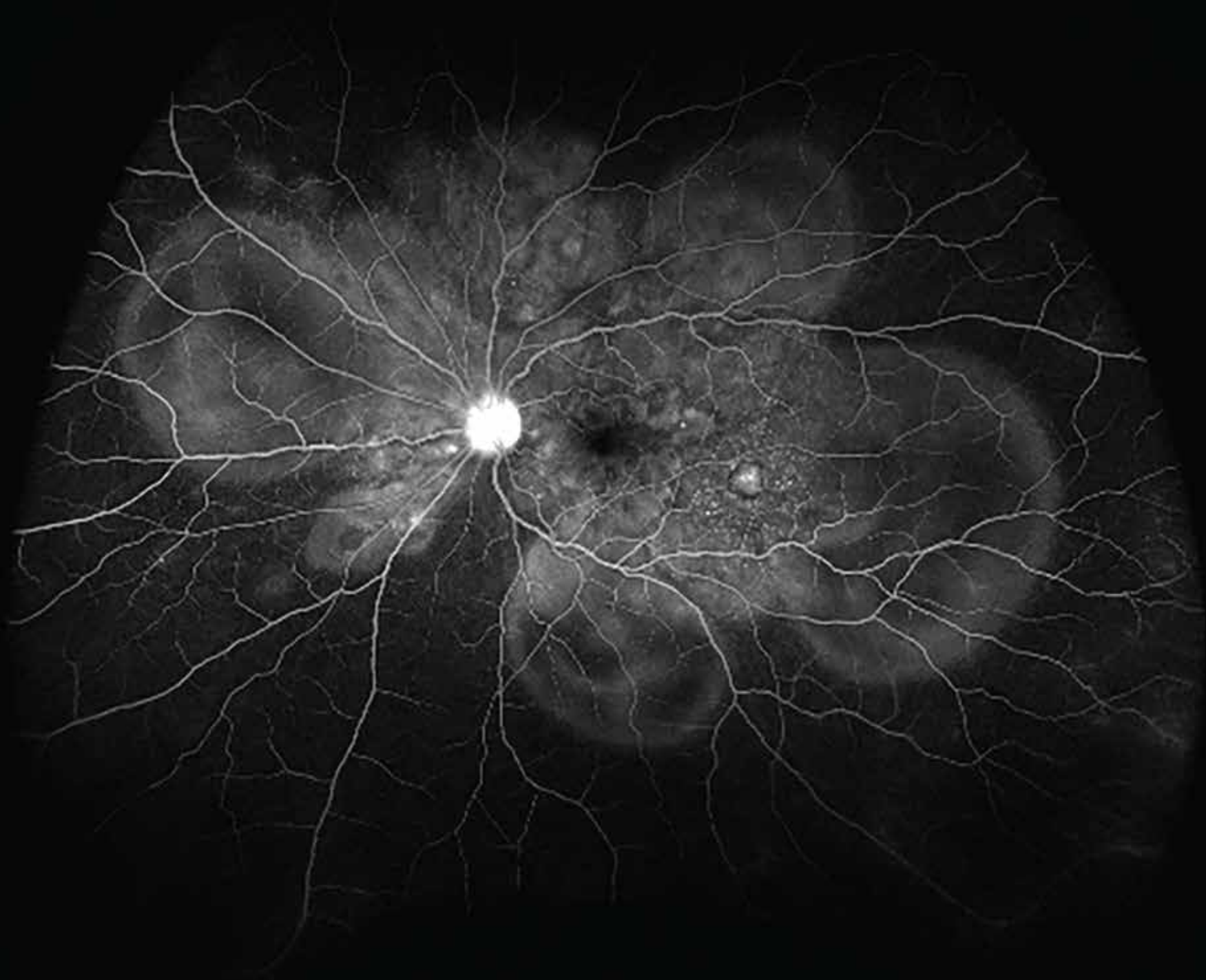
MARCH

S	M	T	W	T	F	S
		1	2	3	4	5
6	7	8	9	10	11	12
13	14	15	16	17	18	19
20	21	22	23	24	25	26
27	28	29	30	31		

MAY

S	M	T	W	T	F	S
1	2	3	4	5	6	7
8	9	10	11	12	13	14
15	16	17	18	19	20	21
22	23	24	25	26	27	28
29	30	31				

SUNDAY	MONDAY	TUESDAY	WEDNESDAY	THURSDAY	FRIDAY	SATURDAY
27	28	29	30	31	1	2
3	4	5	6	7	8	9
10	11	12	13	14	15	16
17	18	19	20	21	22	23
24	25	26	27	28	29	30



**VOGT-KOYANAGI-HARADA
DISEASE**

May

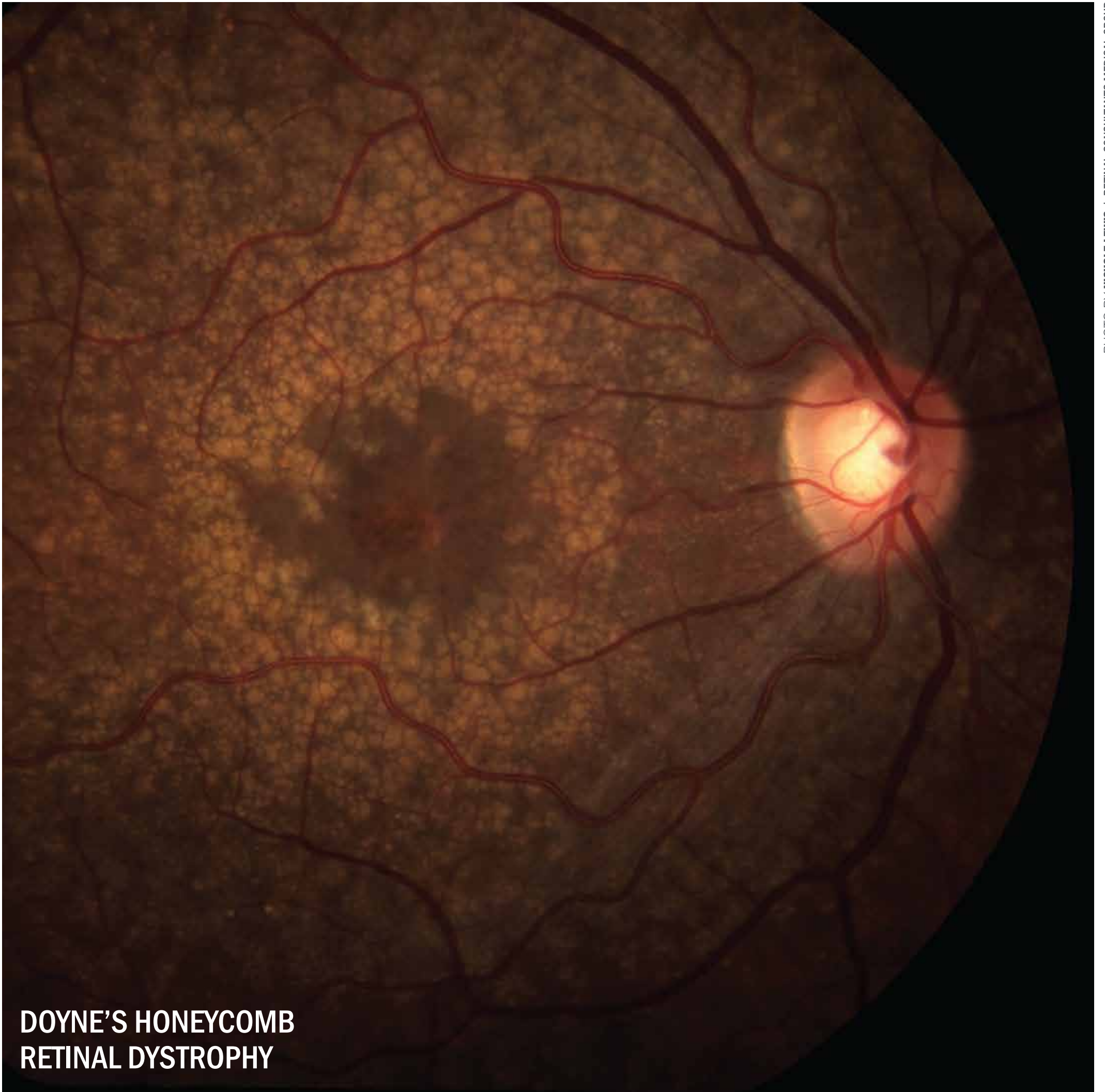
APRIL

S	M	T	W	T	F	S
					1	2
3	4	5	6	7	8	9
10	11	12	13	14	15	16
17	18	19	20	21	22	23
24	25	26	27	28	29	30

JUNE

S	M	T	W	T	F	S
			1	2	3	4
5	6	7	8	9	10	11
12	13	14	15	16	17	18
19	20	21	22	23	24	25
26	27	28	29	30		

SUNDAY	MONDAY	TUESDAY	WEDNESDAY	THURSDAY	FRIDAY	SATURDAY
1	2	3	4	5	6	7
8	9	10	11	12	13	14
15	16	17	18	19	20	21
22	23	24	25	26	27	28
29	30	31	1	2	3	4
	memorial day					



**DOYNE'S HONEYCOMB
RETINAL DYSTROPHY**

June

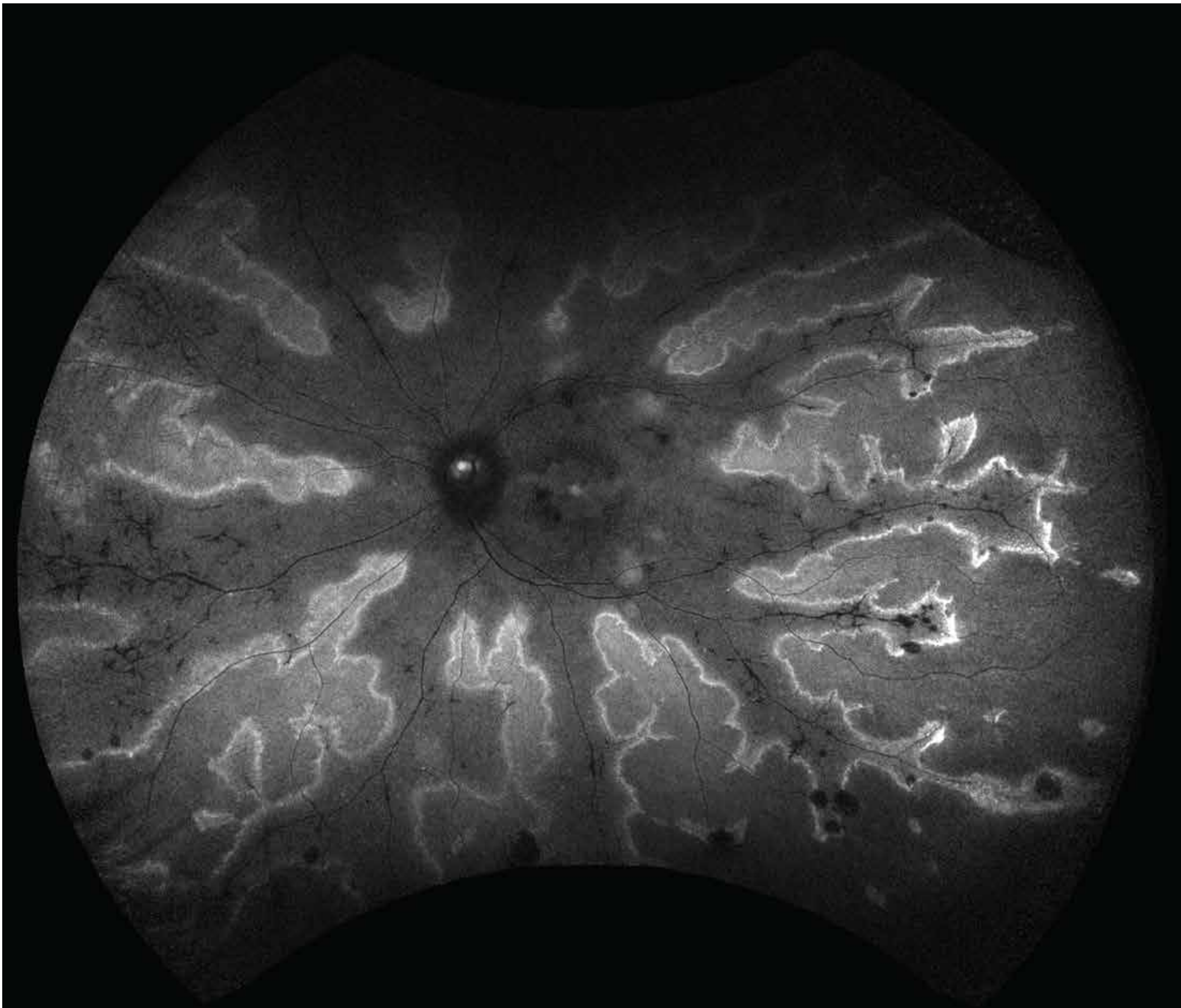
MAY

S	M	T	W	T	F	S
1	2	3	4	5	6	7
8	9	10	11	12	13	14
15	16	17	18	19	20	21
22	23	24	25	26	27	28
29	30	31				

JULY

S	M	T	W	T	F	S
					1	2
3	4	5	6	7	8	9
10	11	12	13	14	15	16
17	18	19	20	21	22	23
24	25	26	27	28	29	30
31						

SUNDAY	MONDAY	TUESDAY	WEDNESDAY	THURSDAY	FRIDAY	SATURDAY
29	30	31	1	2	3	4
5	6	7	8	9	10	11
12	13	14	15	16	17	18
19	20	21	22	23	24	25
juneteenth 26	27	28	29	30	1	2



**INACTIVE
CHORIORETINITIS**

July

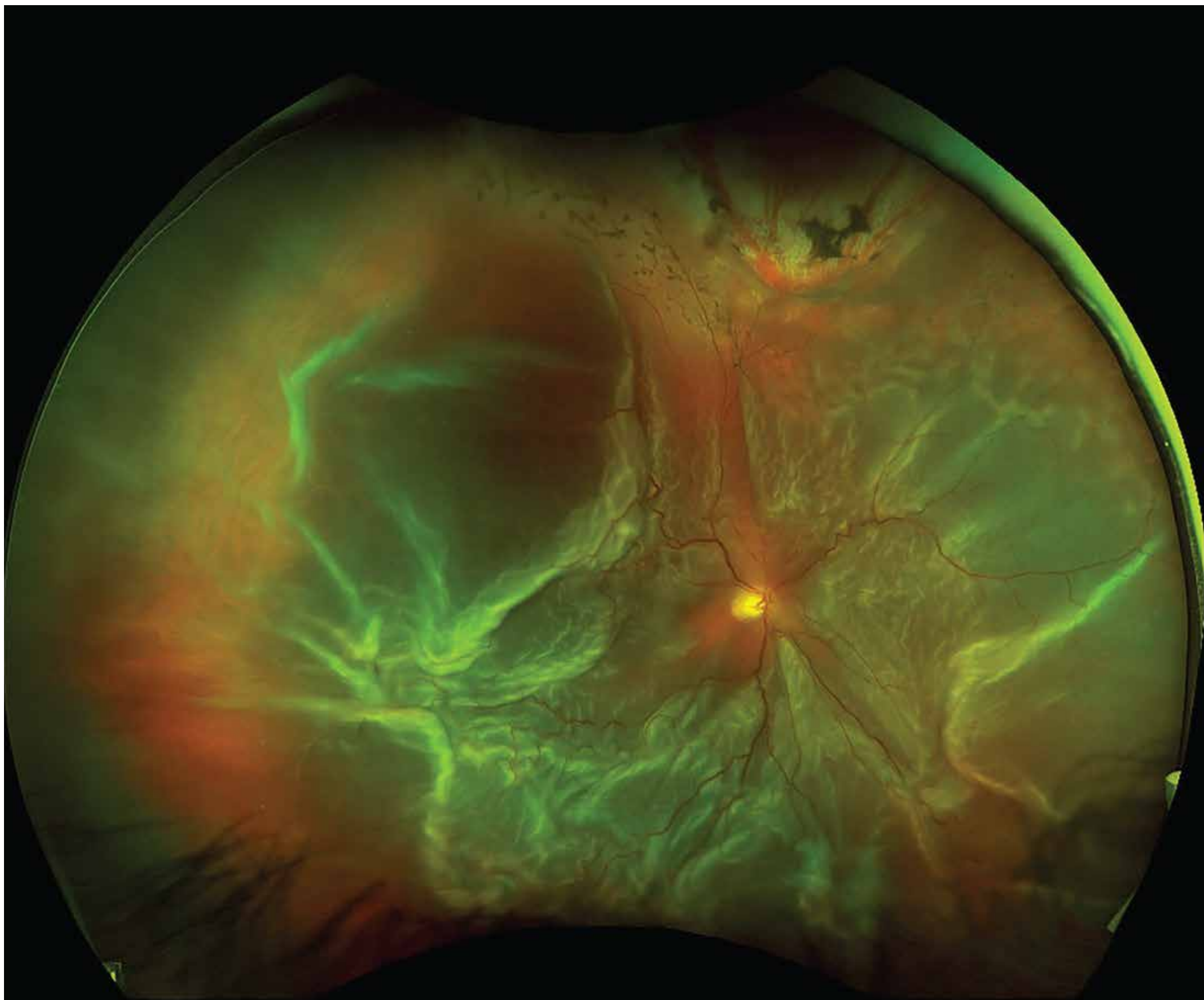
JUNE

S	M	T	W	T	F	S
			1	2	3	4
5	6	7	8	9	10	11
12	13	14	15	16	17	18
19	20	21	22	23	24	25
26	27	28	29	30		

AUGUST

S	M	T	W	T	F	S
	1	2	3	4	5	6
7	8	9	10	11	12	13
14	15	16	17	18	19	20
21	22	23	24	25	26	27
28	29	30	31			

SUNDAY	MONDAY	TUESDAY	WEDNESDAY	THURSDAY	FRIDAY	SATURDAY
26	27	28	29	30	1	2
3	4	5	6	7	8	9
10	independence day	12	13	14	15	16
17	18	19	20	21	22	23
24	25	26	27	28	29	30
31	1	2	3	4	5	6



**TOTAL RETINAL DETACHMENT
WITH PROLIFERATIVE
VITREORETINOPATHY**

August

JULY

S	M	T	W	T	F	S
					1	2
3	4	5	6	7	8	9
10	11	12	13	14	15	16
17	18	19	20	21	22	23
24	25	26	27	28	29	30
31						

SEPTEMBER

S	M	T	W	T	F	S
				1	2	3
4	5	6	7	8	9	10
11	12	13	14	15	16	17
18	19	20	21	22	23	24
25	26	27	28	29	30	

SUNDAY	MONDAY	TUESDAY	WEDNESDAY	THURSDAY	FRIDAY	SATURDAY
31	1	2	3	4	5	6
7	8	9	10	11	12	13
14	15	16	17	18	19	20
21	22	23	24	25	26	27
28	29	30	31	1	2	3



**MORNING GLORY
DISC ANOMALY**

September

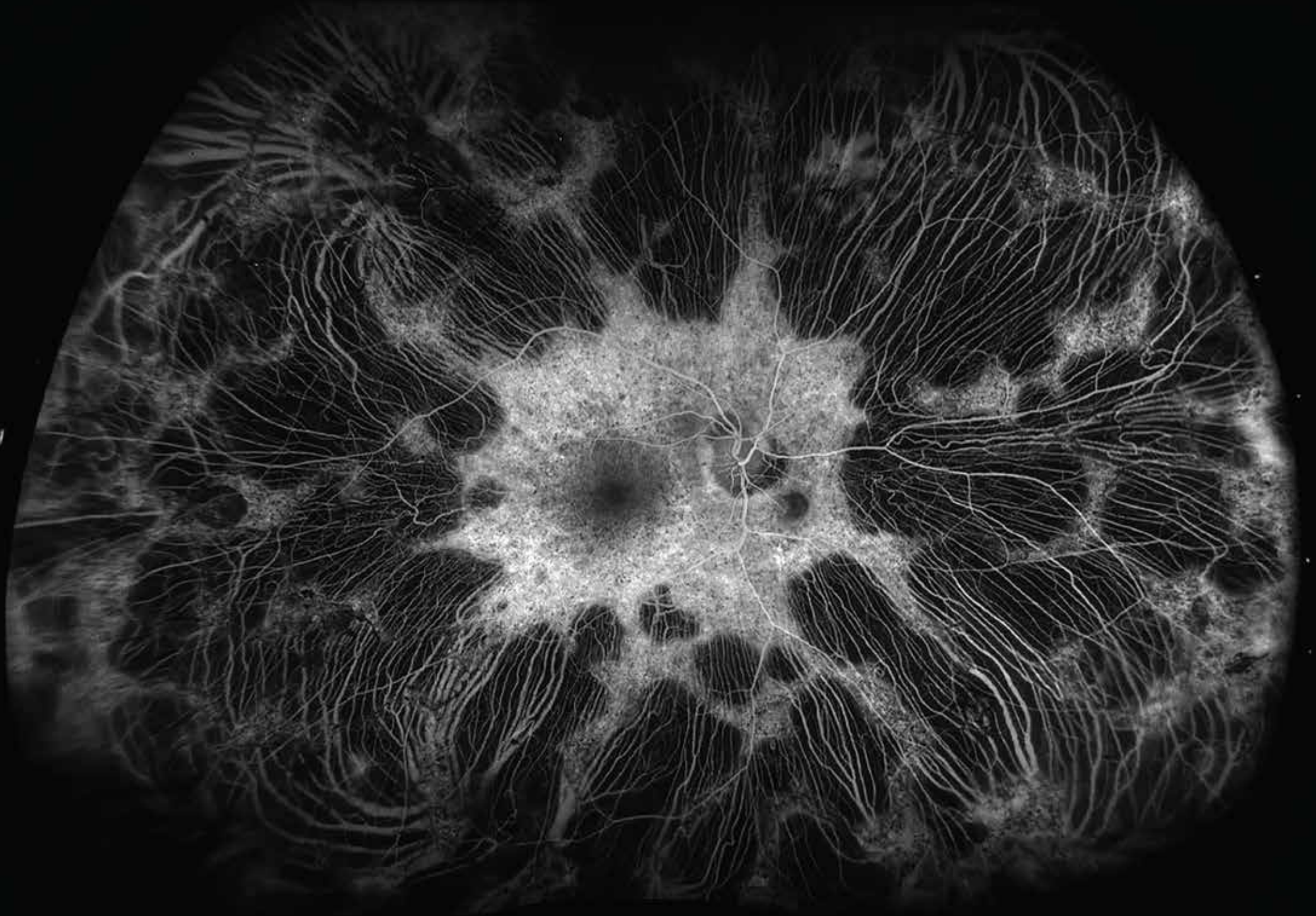
AUGUST

S	M	T	W	T	F	S
	1	2	3	4	5	6
7	8	9	10	11	12	13
14	15	16	17	18	19	20
21	22	23	24	25	26	27
28	29	30	31			

OCTOBER

S	M	T	W	T	F	S
						1
2	3	4	5	6	7	8
9	10	11	12	13	14	15
16	17	18	19	20	21	22
23	24	25	26	27	28	29
30	31					

SUNDAY	MONDAY	TUESDAY	WEDNESDAY	THURSDAY	FRIDAY	SATURDAY
28	29	30	31	1	2	3
4	5	6	7	8	9	10
11	labor day	13	14	15	16	17
18	19	20	21	22	23	24
25	26	27	28	29	30	1



**SUSPECTED GYRATE ATROPHY
CARRIER STATE IN A FEMALE
WITH NORMAL VISUAL ACUITY**

October

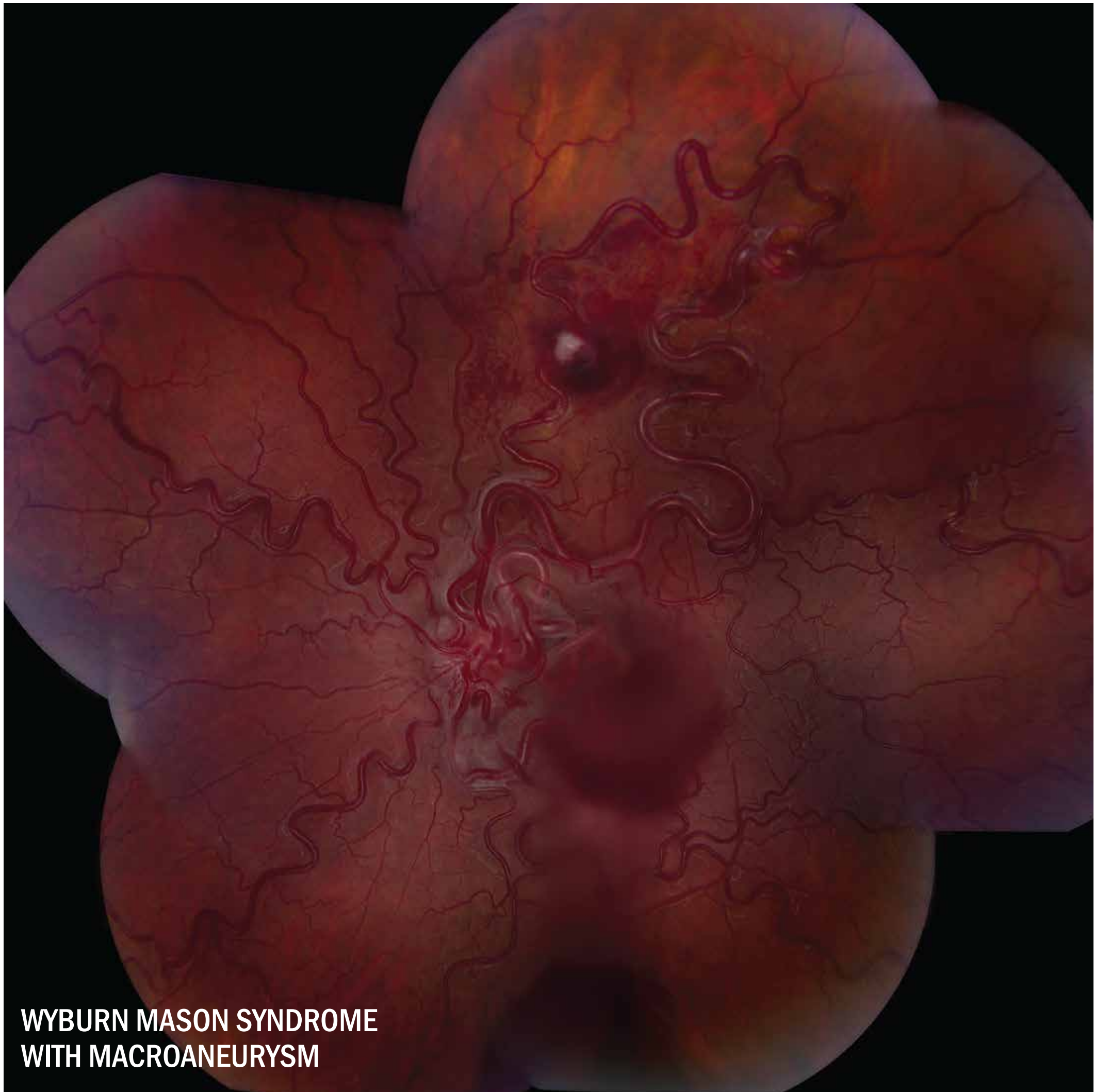
SEPTEMBER

S	M	T	W	T	F	S
				1	2	3
4	5	6	7	8	9	10
11	12	13	14	15	16	17
18	19	20	21	22	23	24
25	26	27	28	29	30	

NOVEMBER

S	M	T	W	T	F	S
		1	2	3	4	5
6	7	8	9	10	11	12
13	14	15	16	17	18	19
20	21	22	23	24	25	26
27	28	29	30			

SUNDAY	MONDAY	TUESDAY	WEDNESDAY	THURSDAY	FRIDAY	SATURDAY
25	26	27	28	29	30	1
2	3	4	5	6	7	8
9	10	11	12	13	14	15
16	columbus day	18	19	20	21	22
23	24	25	26	27	28	29
30	31	1	2	3	4	5



**WYBURN MASON SYNDROME
WITH MACROANEURYSM**

November

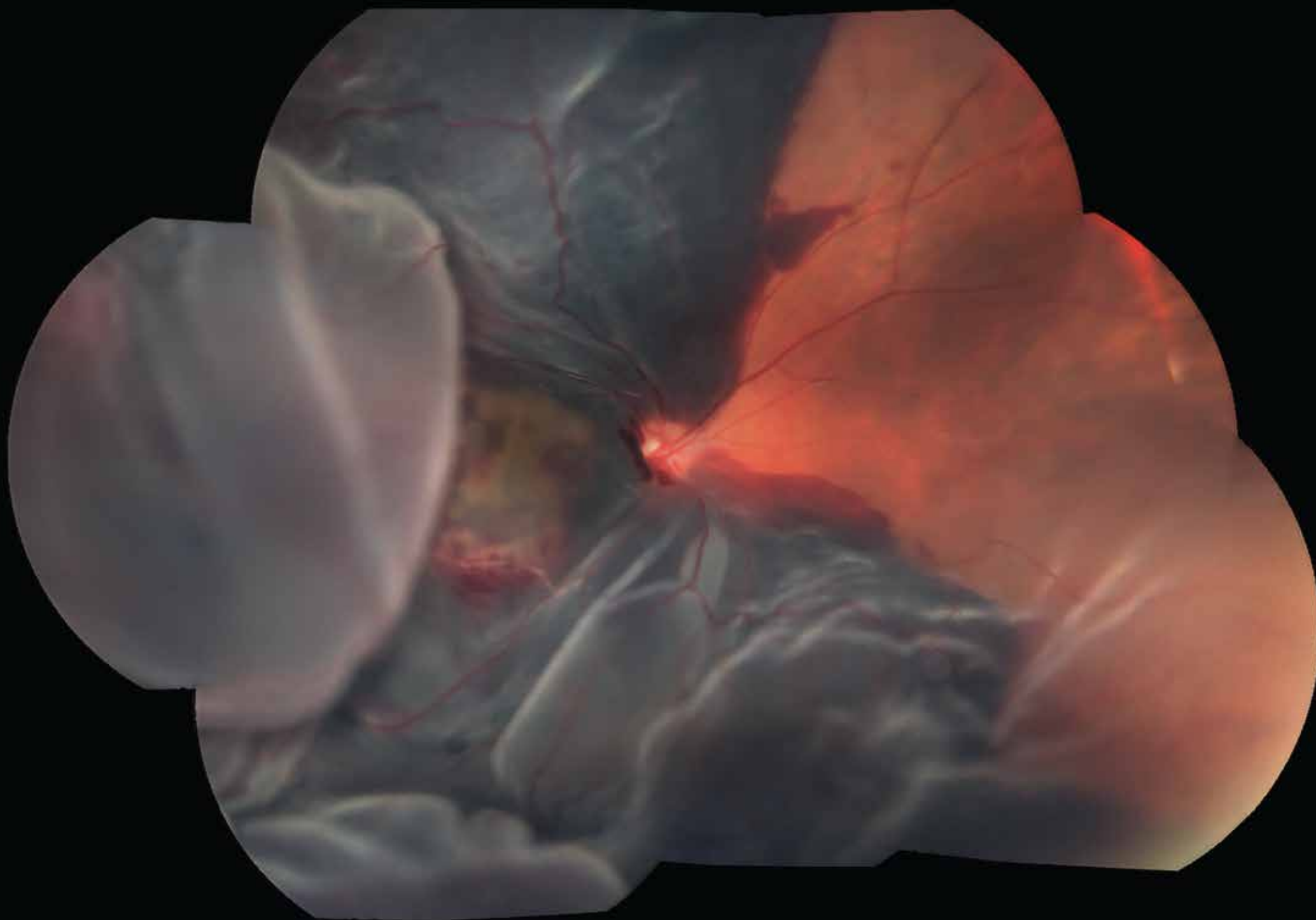
OCTOBER

S	M	T	W	T	F	S
						1
2	3	4	5	6	7	8
9	10	11	12	13	14	15
16	17	18	19	20	21	22
23	24	25	26	27	28	29
30	31					

DECEMBER

S	M	T	W	T	F	S
				1	2	3
4	5	6	7	8	9	10
11	12	13	14	15	16	17
18	19	20	21	22	23	24
25	26	27	28	29	30	31

SUNDAY	MONDAY	TUESDAY	WEDNESDAY	THURSDAY	FRIDAY	SATURDAY
30	31	1	2	3	4	5
6	7	8	9	10	11	12
13	14	15	16	17	veterans day	19
20	21	22	23	24	25	26
27	28	29	30	thanksgiving day	1	2
						3



**MASSIVE SUBRETINAL
HEMORRHAGE AND FLUID
FROM MACULAR CHOROIDAL
NEOVASCULARIZATION**

December

NOVEMBER

S	M	T	W	T	F	S
		1	2	3	4	5
6	7	8	9	10	11	12
13	14	15	16	17	18	19
20	21	22	23	24	25	26
27	28	29	30			

JANUARY

S	M	T	W	T	F	S
1	2	3	4	5	6	7
8	9	10	11	12	13	14
15	16	17	18	19	20	21
22	23	24	25	26	27	28
29	30	31				

SUNDAY	MONDAY	TUESDAY	WEDNESDAY	THURSDAY	FRIDAY	SATURDAY
27	28	29	30	1	2	3
4	5	6	7	8	9	10
11	12	13	14	15	16	17
18	19	20	21	22	23	24
25	26	27	28	29	30	31
christmas day						new year's eve



**CHOROIDAL RUPTURE
FROM A CAT SCRATCH**

January

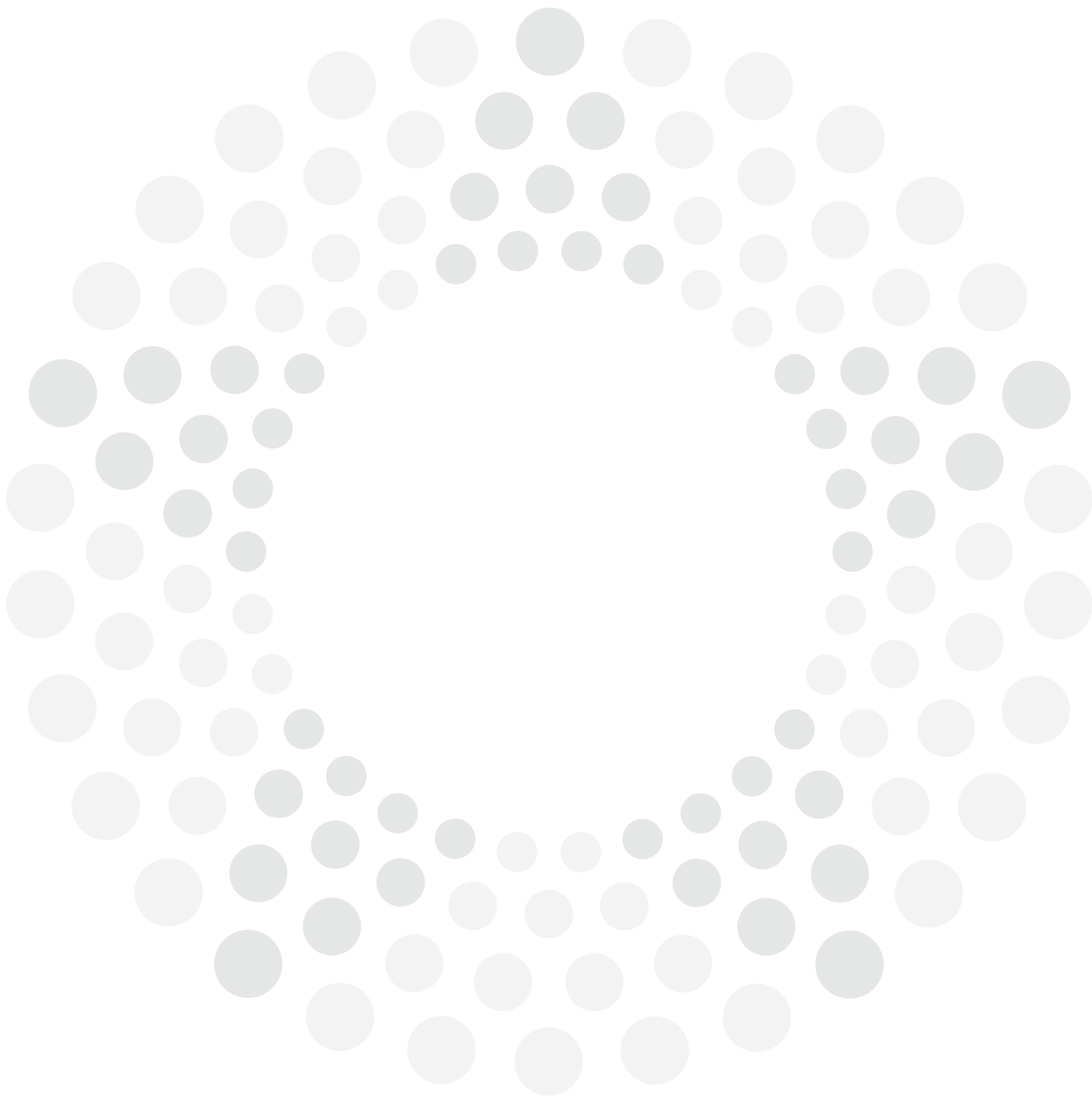
DECEMBER

S	M	T	W	T	F	S
			1	2	3	4
5	6	7	8	9	10	11
12	13	14	15	16	17	18
19	20	21	22	23	24	25
26	27	28	29	30	31	

FEBRUARY

S	M	T	W	T	F	S
		1	2	3	4	5
6	7	8	9	10	11	12
13	14	15	16	17	18	19
20	21	22	23	24	25	26
27	28					

SUNDAY	MONDAY	TUESDAY	WEDNESDAY	THURSDAY	FRIDAY	SATURDAY
1	2	3	4	5	6	7
new year's day						
8	9	10	11	12	13	14
	martin luther king, jr. day					
15	16	17	18	19	20	21
22	23	24	25	26	27	28
29	30	31	1	2	3	4



PRESERVING VISION IS OUR MISSION

DARRELL E. BASKIN, MD • MATTHEW S. BENZ, MD • DAVID M. BROWN, MD, FACS • ERIC CHEN, MD • MOISES A. CHICA, MD • RICHARD H. FISH, MD, FACS • CHRISTOPHER R. HENRY, MD
SARAH E. HOLY, MD • ROSA Y. KIM, MD • R. GARY LANE, MD • KELLY L. LARKIN, MD • JAMES C. MAJOR, JR., MD, PHD, FACS • CALVIN E. MEIN, MD • VY T. NGUYEN, MD
SAGAR B. PATEL, MD • AMY C. SCHEFLER, MD, FACS • ANKOOR R. SHAH, MD • TIEN P. WONG, MD • CHARLES C. WYKOFF, MD, PHD, FACS

GREATER HOUSTON AREA

Bellaire
Texas Medical Center
1960 Area/Peakwood
Brenham
Katy/Cinco Ranch
Kingwood
Livingston

Lufkin
Memorial
Northwest/Cypress
Pearland
Space Center/Pasadena
Sugar Land
The Woodlands

GREATER SAN ANTONIO AREA

Medical Center
Stone Oak
Alamo Ranch
Boerne

Fredericksburg
Kerrville
New Braunfels
Seguin



Retina
Consultants
of Texas

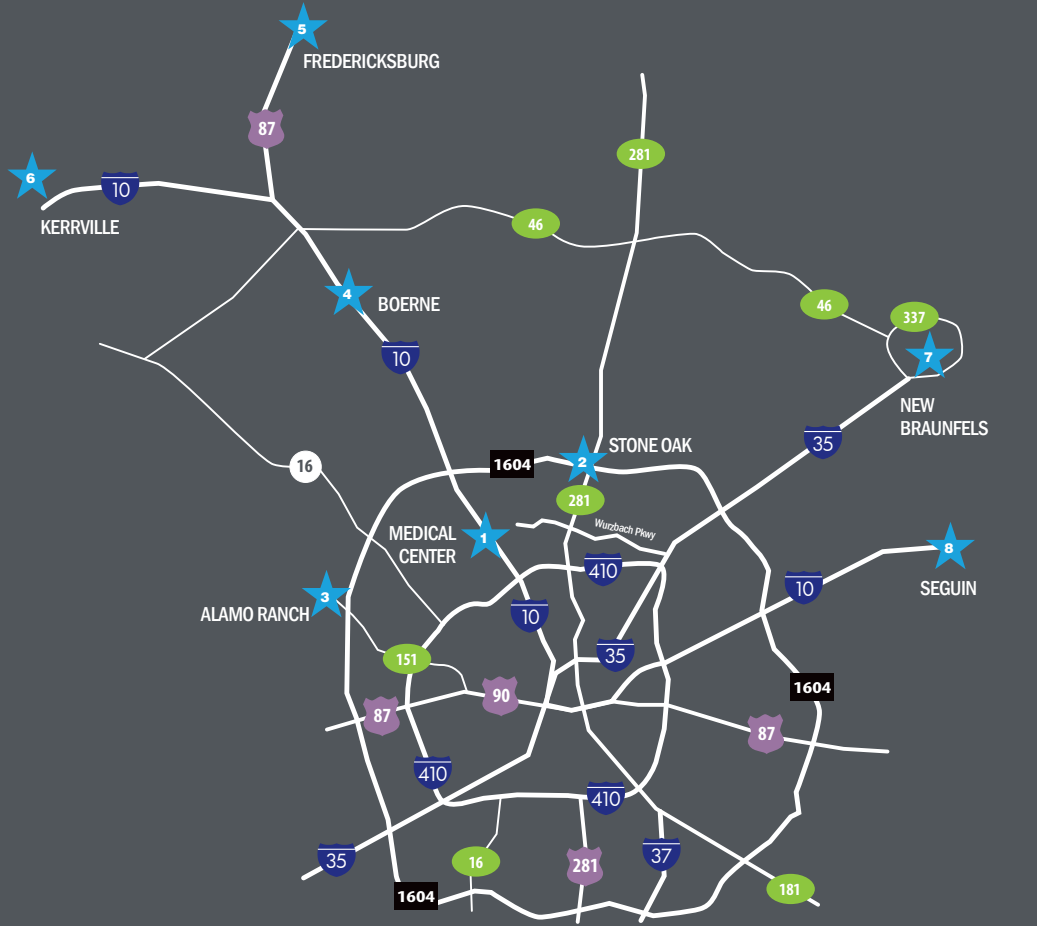


Retina
Consultants
of Texas

DISEASES AND SURGERY
OF THE RETINA AND VITREOUS



GREATER HOUSTON AREA



GREATER SAN ANTONIO AREA

- 1

BELLAIRE
4460 Bissonnet Street, Suite 200
Bellaire, TX 77401
- 2

TEXAS MEDICAL CENTER
6560 Fannin, Suite 750
Houston, TX 77030
- 3

1960 AREA/PEAKWOOD
800 Peakwood Drive, Suite 1C
Houston, TX 77090
- 4

BRENHAM
Bluebonnet Center
2620 Highway 36 South
Brenham, TX 77833
- 5

KATY/CINCO RANCH
LaCenterra at Cinco Ranch
Building G-H
23501 Cinco Ranch Blvd., Suite G205
Katy, TX 77494
- 6

KINGWOOD
Kingwood Medical Arts Building
350 Kingwood Medical Drive
Suite 200
Kingwood, TX 77339
- 7

LIVINGSTON
Livingston Professional Plaza
400 Bypass Lane, Suite 105
Livingston, TX 77351
- 8

LUFKIN
2906 Brentwood Drive, Suite 300
Lufkin, TX 75901
- 9

MEMORIAL
10100 Katy Freeway, Suite 100
Houston, TX 77043
- 10

NORTHWEST/CYPRESS
North Cypress Medical Center
21216 Northwest Freeway, Suite 630
Cypress, TX 77429
- 11

PEARLAND
10907 Memorial Hermann Drive
Suite 450
Pearland, TX 77584
- 12

SPACE CENTER/PASADENA
11460 Space Center Boulevard
Suite 2
Houston, TX 77059
- 13

SUGAR LAND
6921 Brisbane Court, Suite 200
Sugar Land, TX 77479
- 14

THE WOODLANDS
Medical Arts Center II
17350 St. Luke's Way, Suite 120
The Woodlands, TX 77384

- 1

MEDICAL CENTER
9480 Huebner Road, Suite 310
San Antonio, TX 78240
- 2

STONE OAK
1314 East Sonterra, Suite 2104
San Antonio, TX 78258
- 3

ALAMO RANCH
11345 Alamo Ranch Parkway
San Antonio, TX 78253
- 4

BOERNE
113 Falls Court
Boerne, TX 78006
- 5

FREDERICKSBURG
751 South Washington Street
Fredericksburg, TX 78624
- 6

KERRVILLE
1446 Sidney Baker Street
Kerrville, TX 78028
- 7

NEW BRAUNFELS
218 East Austin Street
New Braunfels, TX 78130
- 8

SEGUIN
908 East Court Street
Seguin, TX 78155

retinaconsultantstexas.com

HOUSTON

713.524.3434
800.833.5921

SAN ANTONIO

210.615.1311
800.833.5921

DARRELL E. BASKIN, MD • MATTHEW S. BENZ, MD • DAVID M. BROWN, MD, FACS • ERIC CHEN, MD • MOISES A. CHICA, MD • RICHARD H. FISH, MD, FACS CHRISTOPHER R. HENRY, MD
SARAH E. HOLY, MD • ROSA Y. KIM, MD • R. GARY LANE, MD • KELLY L. LARKIN, MD • JAMES C. MAJOR, JR., MD, PHD, FACS • CALVIN E. MEIN, MD • VY T. NGUYEN, MD
SAGAR B. PATEL, MD • AMY C. SCHEFLER, MD, FACS • ANKOOR R. SHAH, MD • TIEN P. WONG, MD • CHARLES C. WYKOFF, MD, PHD, FACS